



## Sylvania

3 2 2

Sitting proudly on the elevated side of Evelyn Street North, this newly renovated home takes everything to the next level! From the wide board herringbone hardwood floors to the bespoke marble kitchen with gold accents, you will be living in six-star luxury every day of the week. The large open plan living and dining allow for inspired everyday living, as you admire the sweeping north facing water views through floor to ceiling windows which open grandly onto a full-length sun-drenched balcony. The beautiful outdoor area begs to continue the theme of an entertainer's paradise with raised decking, level sunny lawn and tropical landscaping for maximum appeal and minimum maintenance. Full home automation including window coverings and video security allow effortless peace of mind.

**Type** : House

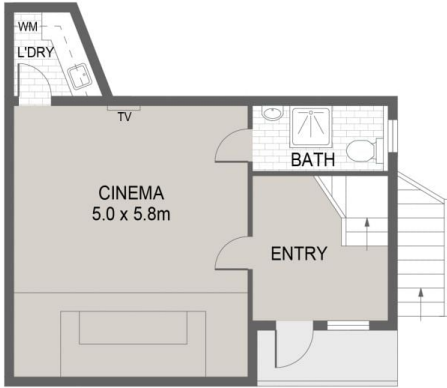
**View** : <https://www.greigproperty.com/lease/nsw/sutherland/sylvania/residential/house/8022324>



**Jodie Greig**  
0414666559

[For full version visit the website](https://www.greigproperty.com)

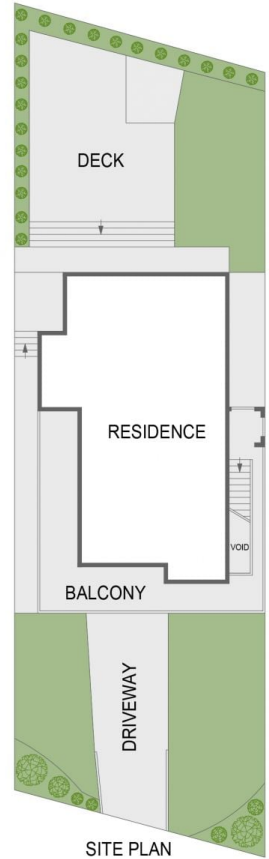
# 3 Evelyn Street North, Sylvania



GROUND FLOOR



FIRST FLOOR



SITE PLAN



All information contained in this document is from sources we believe to be accurate, however we cannot guarantee its accuracy. Interested persons should make and rely on their own enquiries in relation to measurements, dimensions, layout, furniture and descriptions.