



## Sylvania Waters

5 2 1

This freshly painted double storey home presents a fantastic waterfront opportunity. Offering open plan living with five bedrooms, oversized kitchen, modern renovated bathroom, huge covered outdoor entertaining area and inground swimming pool, this large west facing block looking down the canals of Sylvania Waters is your chance to live the dream.

Situated on 701.9m<sup>2</sup>, this property boasts an existing pontoon and floating dock, perfect for boat owners or water sports enthusiasts.

Close to primary and high schools, Westfield Miranda and Southgate Shopping Centre, with a flat walk to a bus stop at the end of your street.

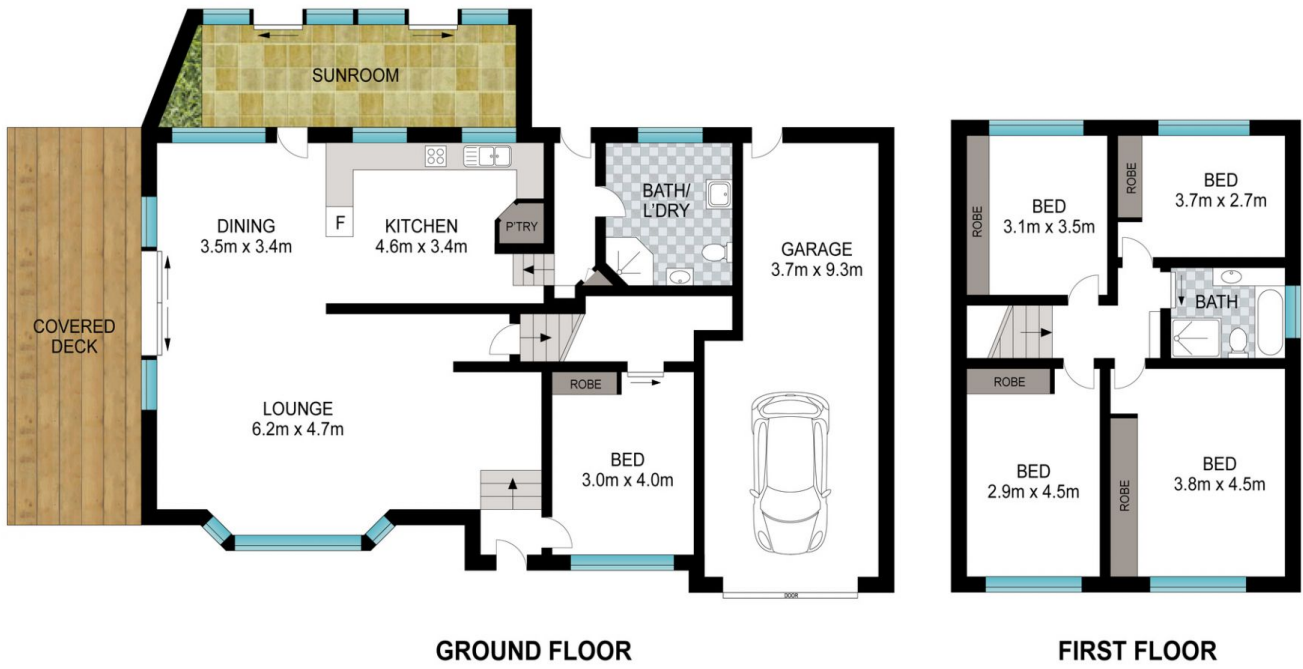
[For full version visit the website](#)

**Type** : House

**View** : <https://www.greigproperty.com/lease/nsw/sutherland/sylvania-waters/residential/house/7995987>



**Jodie Greig**  
0414666559



INT: 210 m<sup>2</sup>  
EXT: 38 m<sup>2</sup>

Scale in metres. Indicative only. Dimensions are approximate. All information contained herein is gathered from sources we believe to be reliable. However, we cannot guarantee its accuracy and interested persons should rely on their own enquiries.

3 Bogan Avenue, Sylvania Waters