

**30A Charles Place Jannali NSW**

3 2 1

Nestled in Jannali, in a quiet leafy location this original three-bedroom, two bathroom home on a 695.6m2 level north facing rear garden block is your chance to secure a foothold in the Sutherland Shire. With some elbow grease this house could be renovated back to its yesteryear charm or knocked down and rebuilt as the home of your dreams. Just a five minute walk to the train station and all that Jannali Village offers, if you use your imagination this could be the one you've been looking for.

- Three bedroom and two bathrooms
- Separate garage
- Level North facing rear garden
- Eight minute walk to Jannali train station
- Five minute drive to Kareela Village Shopping Centre

[For full version visit the website](https://www.greigproperty.com)

**Type** : House  
**Price** : \$ 1,725,000  
**Land Size** : 695.6 sqm  
**View** : <https://www.greigproperty.com/sale/nsw/sutherlandland/jannali/residential/house/7971657>

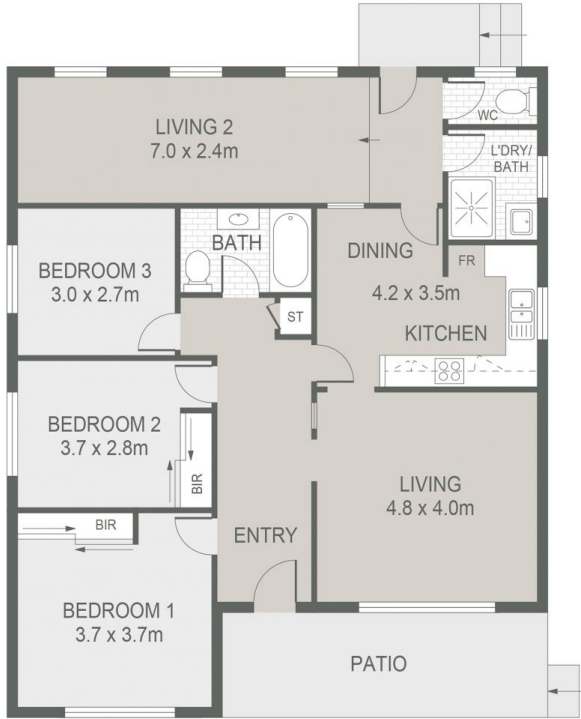


**David Greig**  
0414666559

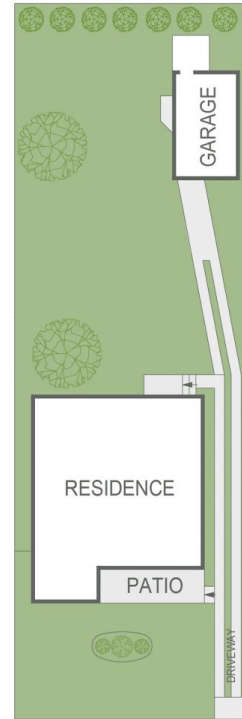
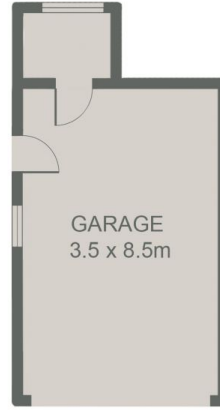


**Aaron Dunn**  
0414 544 116

30A Charles Place, Jannali



FLOOR PLAN



SITE PLAN



All information contained in this document is from sources we believe to be accurate, however we cannot guarantee its accuracy. Interested persons should make and rely on their own enquiries in relation to measurements, dimensions, layout, furniture and descriptions.